

The Diversity & Inclusion Conference, 30th April 2026

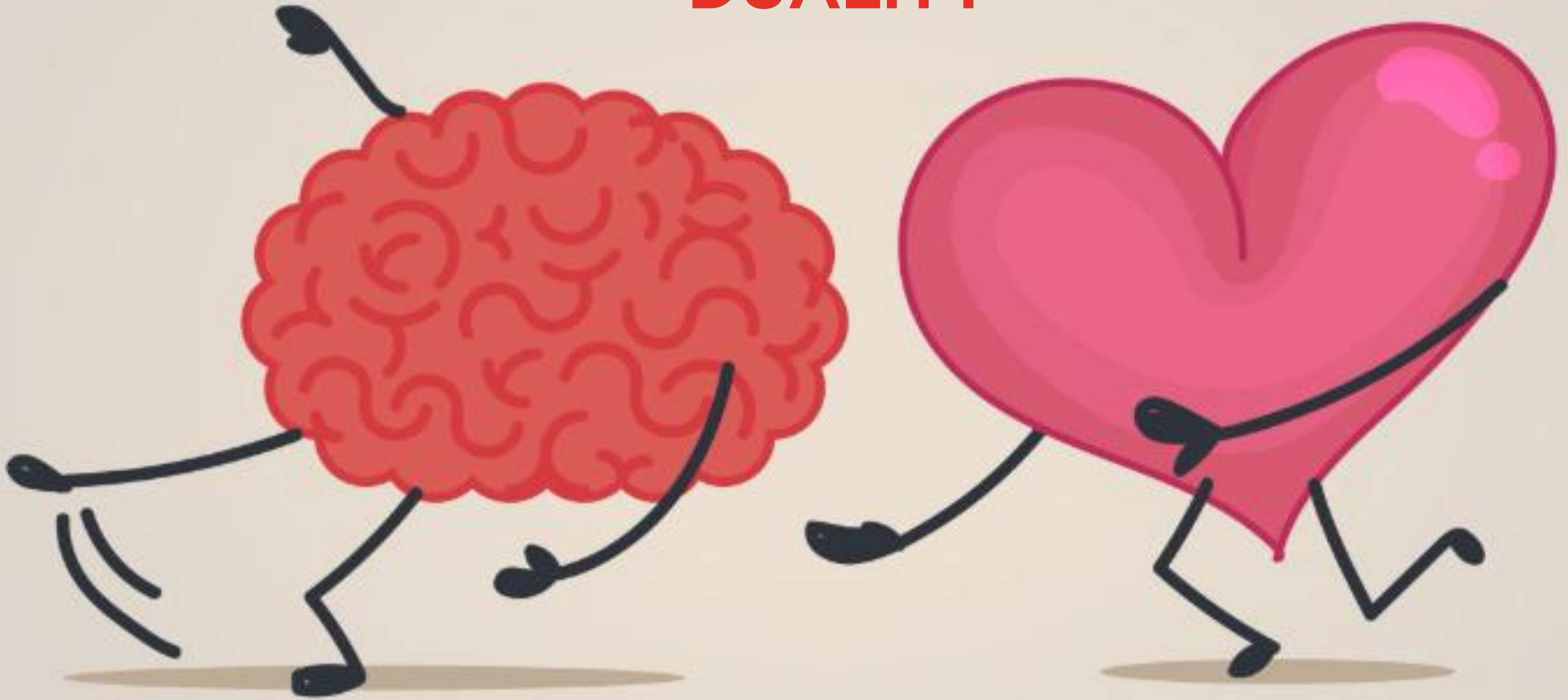
**UNMASKING AUTHENTICITY:
A PERSONAL JOURNEY IN
INCLUSIVE LEADERSHIP**

Kathrine Glahn

A large bonfire of logs is burning brightly in a field at dusk. The fire is the central focus, with bright orange and yellow flames rising from a conical stack of logs. Thick, dark smoke billows upwards from the fire, filling the upper half of the frame. In the background, a calm lake stretches across the horizon under a twilight sky with soft pink and blue hues. A small, dark tent is pitched on the grass to the right of the fire. The overall scene is serene and evocative of a traditional Midsummer's Eve celebration.

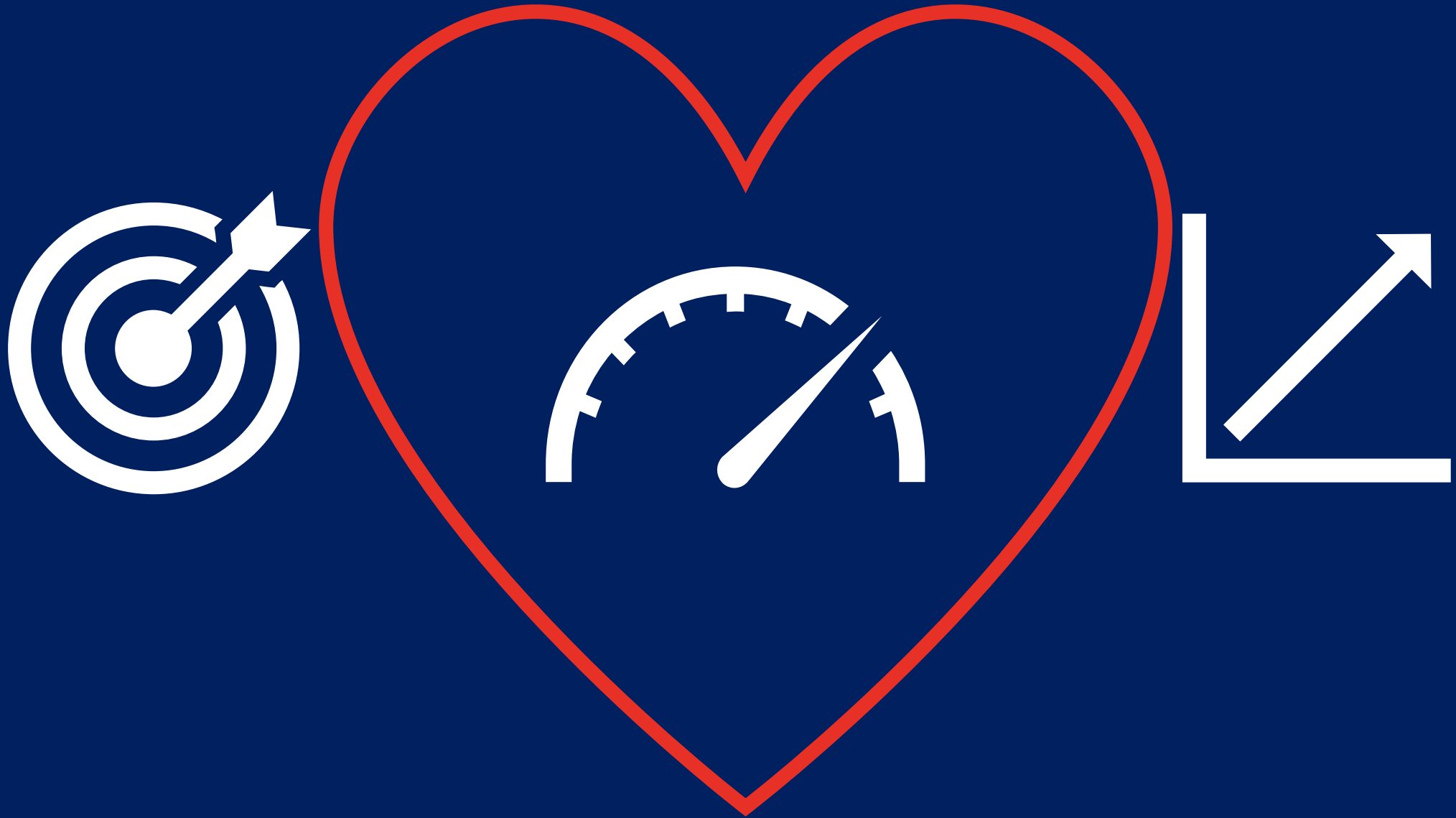
**ON A HOT
MIDSUMMER'S EVE...**

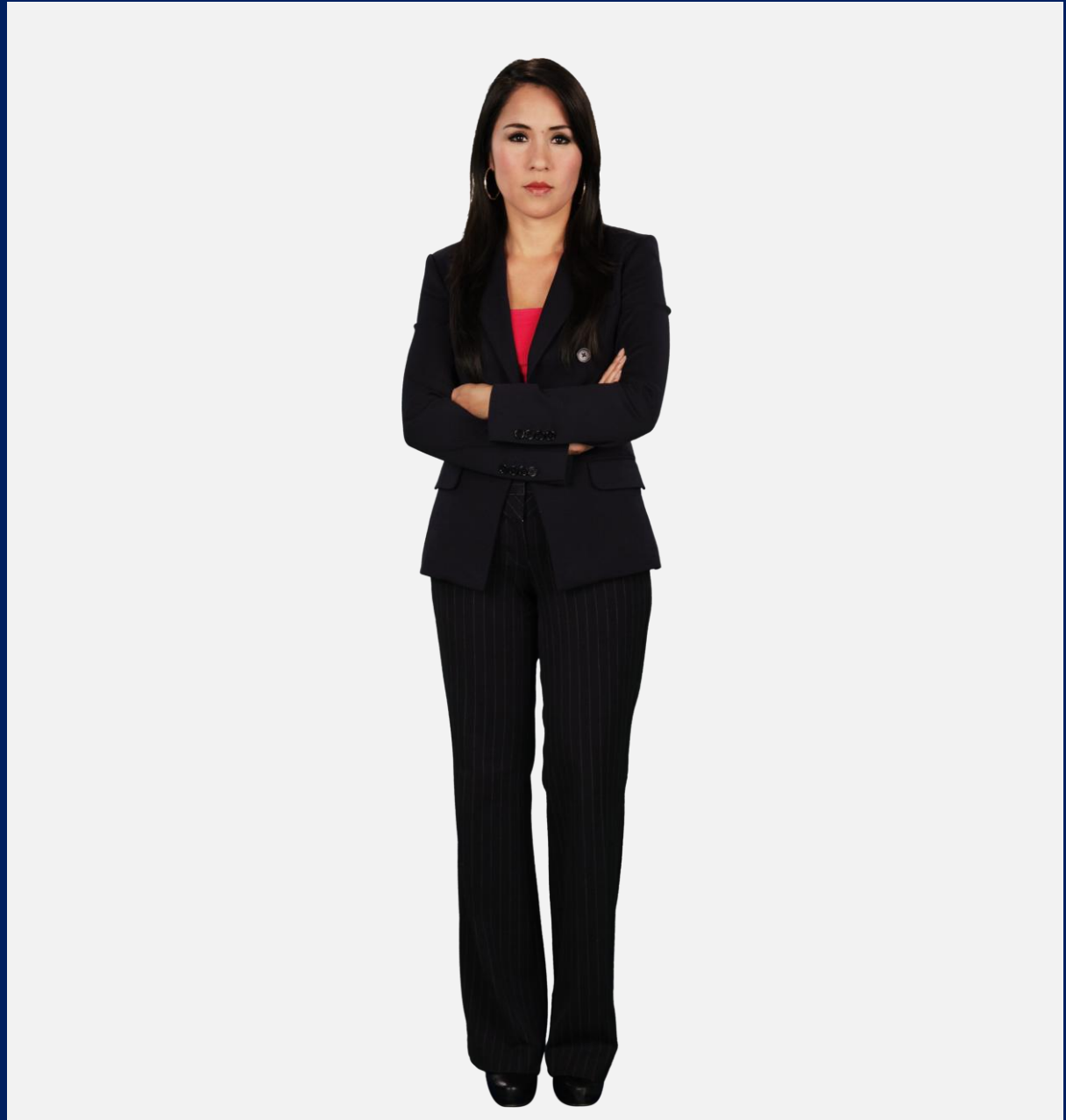
DUALITY



BY CHANCE







RATIONALITY

INDEPENDENCE

INTEGRITY

HONESTY

JUSTICE

PRODUCTIVITY

PRIDE





**COMFORT
SHOPPING**

STOCKHOLM SYNDROME...





THE BREAKUP...

BE LOVE

PANDORA





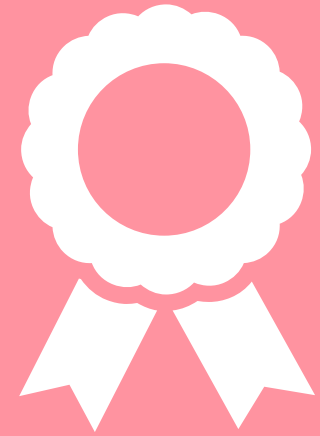
**WE
DREAM**



**WE
DARE**



**WE
CARE**



**WE
DELIVER**



**INCLUSION STARTS
WITH THE COURAGE TO
UNMASK YOURSELF!**

**FIND YOUR OWN
VERSION OF 'BE LOVE'
- AND LEAD YOURSELF
AND OTHERS WITH IT**